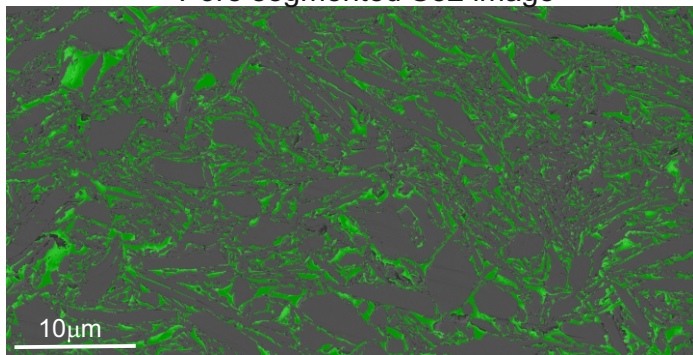
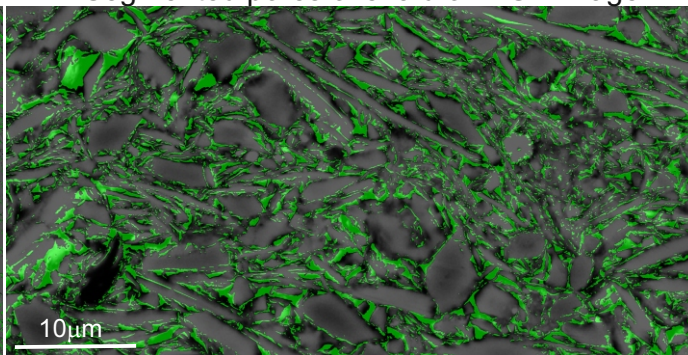


SN-11 (U1480F-3H-3W-124-126, 111.1mbsf)

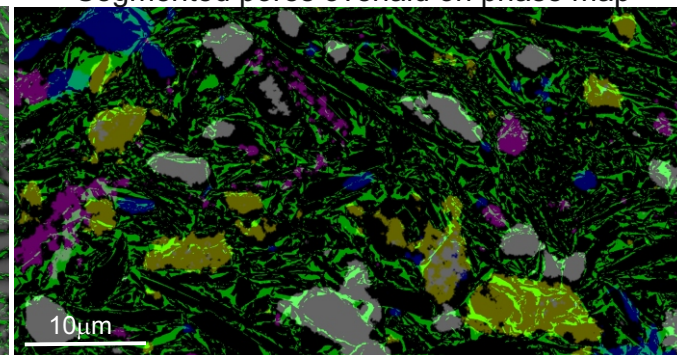
Pore segmented Se2 image



Segmented pores overlaid on BSE image

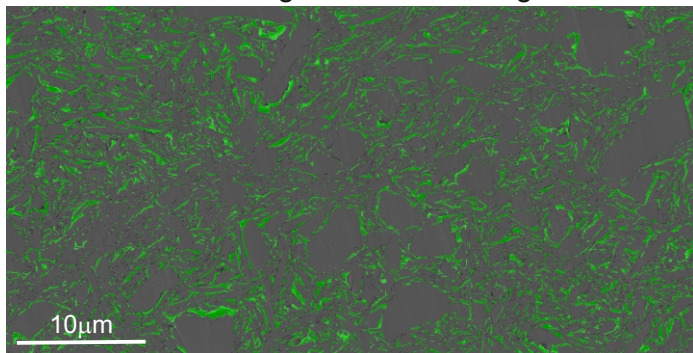


Segmented pores overlaid on phase map

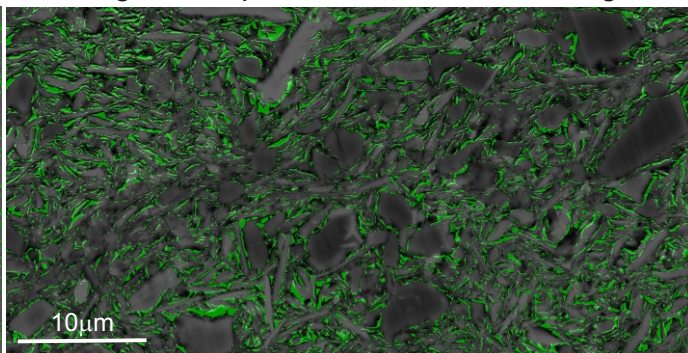


SN-14 (U1480F-53X-2W-72-74, 369.19mbsf)

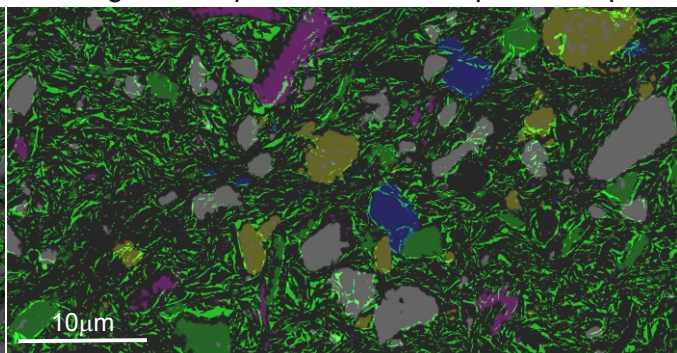
Pore segmented Se2 image



Segmented pores overlaid on BSE image

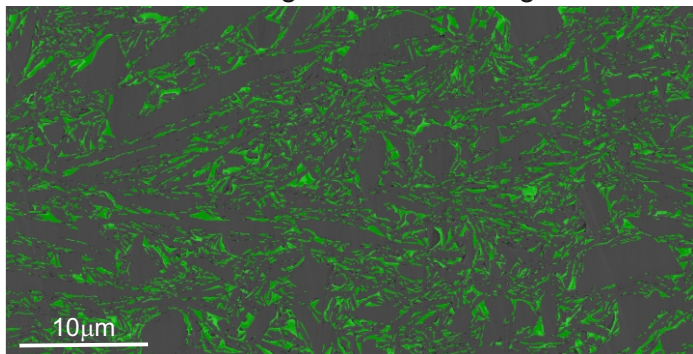


Segmented pores overlaid on phase map

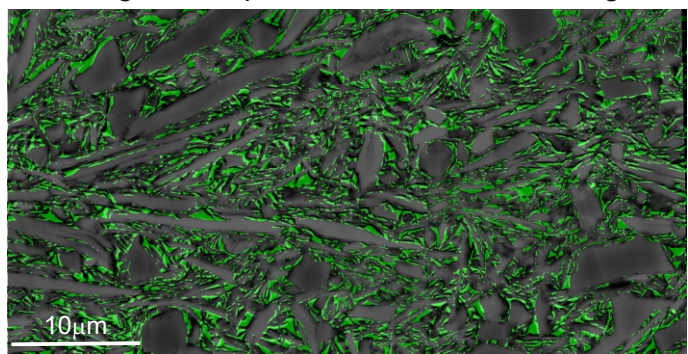


SN-16 (U1480F-67X-CCW-14-16, 505.68mbsf)

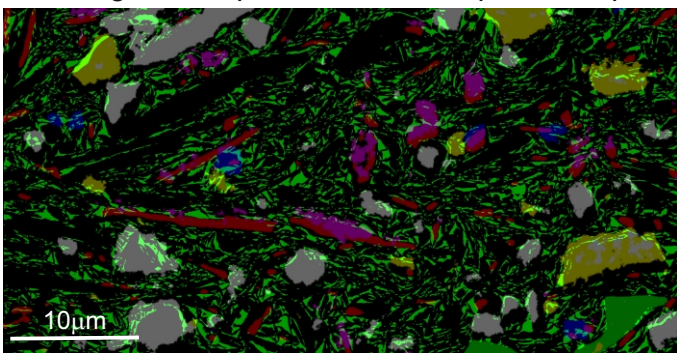
Pore segmented Se2 image



Segmented pores overlaid on BSE image



Segmented pores overlaid on phase map



Supplementary data-5: Represents SE2, BSE images and phase maps of the samples SN-11; SN-14 and SN-16 respectively. Green-colored segmented pores overlaid on BSE mosaic and phase maps. In the phase maps, grey= Quartz; yellow=feldspar; Red=mica; pink=pyrite; blue=calcite.